

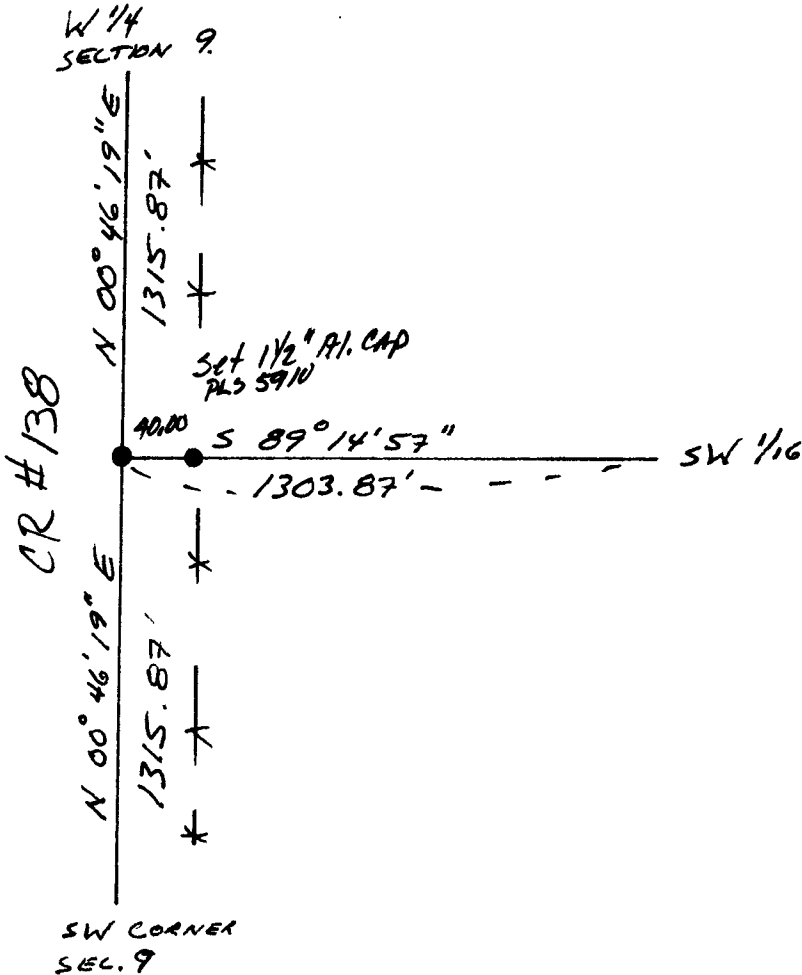
State of Wyoming Corner Record

(in compliance with the CORNER PERPETUATION AND FILING ACT, Wyoming Statutes, 1977, Section 36-11-101, et. seq., and the Rules and Regulations of the Board of Registration for Professional Engineers and Professional Land Surveyors)

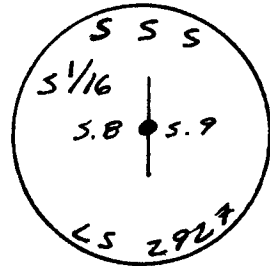
Reverse side of this form may be used if more space is needed.

Record of original survey and citation of source of historical information (if corner is lost or obliterated). Description of corner monumentation evidence found and/or monument and accessories established to perpetuate the location of this corner. Sketch of relative location of monument, accessories, and reference points with course and distance to adjacent corner(s) (if determined in this survey). Method and rationale for reestablishment of lost or obliterated corner.

FOUND 2" ALUMINUM CAP LS 2927.
MARKED AS SHOWN.

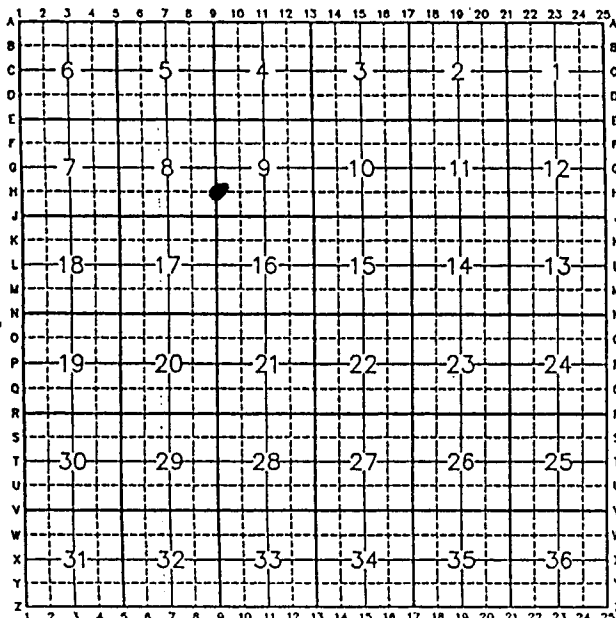


RECEIVING
LARAMIE COUNTY CLERK
CHEYENNE, WY
1995 APR 18 PM 2:53
160753



Date of Field Work: 12-12-94 Office Reference: 94222

CROSS INDEX DIAGRAM



Firm/Agency, Address

STEIL SURVEYING SERVICES
1102 WEST 19th STREET
CHEYENNE WY 82001

This corner record was prepared by me or under my direction and supervision.
SEAL & SIGNATURE

Telephone Number: (307) 634-7273

*filed in corner
rec 13/14*



BOOK **1396**

Corner Name: SOUTH 1/16

Section: 9 T13N R63W 6TH P.M. Cross-Index No.: H-9

0752